



Unveiling the Band Rotunda 1907



c1900



Court House and Post Office, 1910

The Stick Shed: Open daily 10am-3pm

Murtoa Museum (including James Hill Taxidermy Collection inside Old Water Tower), Murtoa Railway Station, Concordia Cottage & Concordia Bell Tower:

Open daily 12-2pm or any time on request (contact 0429 944 673 or 0437 920 734)

Dunmunkle Sumpoiler's Historic Engines: Open at Murtoa's Big Weekend (First Weekend in October)

Information also available at Murtoa Neighbourhood House: 36 McDonald St, Murtoa, Victoria 3390 Ph: (03) 5385 2785



Murtoa

Heritage Trails



UPDATED MAY 2023

Murtoa Heritage Trails

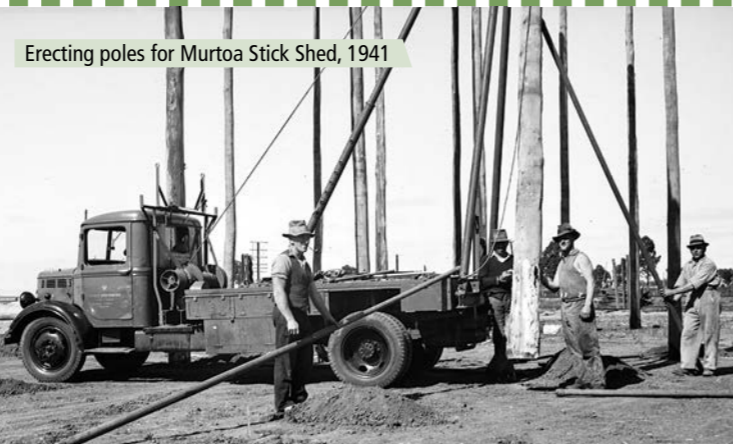
Murtoa was named after the Aboriginal word meaning 'home of the lizard' in about 1873 when the original township survey was completed following excision from the massive 1840's Longerenong squatting run owned by the Wilson family.

Murtoa is one of those fortunate Wimmera towns where the heritage has been largely preserved. The streets still have original brick buildings, and largely un-altered timber shop clusters with high facades, large windows and verandah posts.

Murtoa boasts the Australian National Heritage listed 'Stick Shed'. Other Heritage listed attractions are the 1886 Water Tower and Kurrajong Avenue in Comyn Street – the earliest Victorian planting of Indigenous avenue trees. The stunning 1921 Memorial Arch is a rare example of its type in Victoria, which forms a picturesque frame to the Lake Marma Reserve.

Cover Photographs:
Top: Murtoa Stick Shed under construction 1941
Middle: Historical Murtoa Street views 1910
Bottom: Lake Marma in it's Heyday 1920

- murtoa.net Murtoa
- thestickshed.com.au The Stick Shed
- murtoamuseum.com.au Murtoa Museum
- murtoabigweekend.com.au Murtoa Big Weekend
- yarriambiack.vic.gov.au | Freecall 1800 065 647



Erecting poles for Murtoa Stick Shed, 1941



Sprott Fountain completed, 1900



c1910

Blue Trail

- 1 Dr Rabl's house & surgery 1896-1899
- 2 Anglican Church 1887
- 3 Commercial Hotel 1913
- 4 Commercial Bank 1882
- 5 Hiller's Shop c1878 & house 1910
- 6 Mechanics Hall 1928
- 7 Burton's shop & house c1880
- 8 Sawyer's house 1909
- 9 Heap's house 'Clifton' 1911
- 10 Primary School 1877 & Sloyd room c1920
- 11 Catholic Church 1881
- 12 Degenhardt's house 'Salisbury' c1883
- 13 Evan's house 'Barneswood' c1891
- 14 Relocated Murtoa Railway Bridge orig. 1896
- 15 Rotunda 1907
- 16 Original Town Well c1873
- 17 Sprott Fountain 1896
- 18 Memorial Arch 1921 and Gates c1890s

Other Features

- A** The Stick Shed 1941
- B** Murtoa F-12 College
- C** OLHC Catholic Primary School
- D** Post Office
- E** Medical Centre
- F** Wimmera Inland Freezing Works 1911
- G** Dunmunkle Sumpoiler's Engine Museum
- H** GrainCorp Receival Centre
- I** Murtoa Cemetery (3km)
- J** Uhe's farmhouse c1880
- K** Heritage Kurralong Avenue (Comyn Street)
- L** Cade Lane – Tribute to Dr Cade

Red Trail

- 1 Wagner's house 1892
- 2 Wagner's Murtoa Implement Works 1892
- 3 Petering Watchmaker's shop 1893
- 4 Relocated Dunmunkle Standard office site orig. c1895
- 5 Gulbins Store c1900
- 6 Kruger's Store 1914
- 7 Police residence 1899
- 8 Kruger's house 'Dresden' 1895
- 9 Thomas' Flour Mill 1900-1923
- 10 Murtoa Silo Art (viewing area)
- 11 Railway Station 1878
- H** 12 Old Water Tower 1886 (including James Hill Taxidermy Collection c1875-1910)
Relocated Concordia building & Bell tower c1890
- 13 Railway Hotel 1895
- 14 Early c1880s house
- 15 Methodist Parsonage 1909
- 16 State Savings Bank 1923
- 17 Hempel's tiny house c1910
- 18 Uniting Church c1925
- 19 Presser's house and Cordial factory 1909

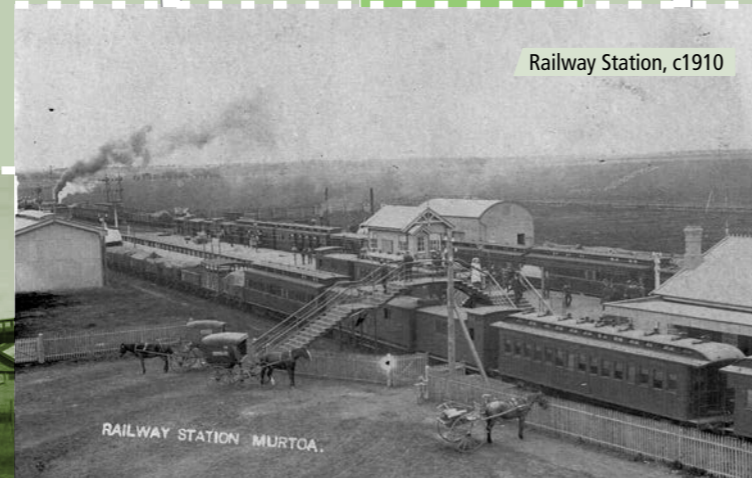
* Indicates Building Of Interest



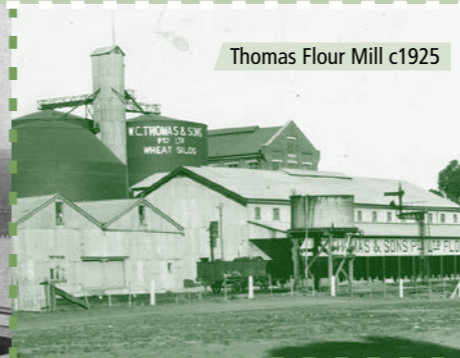
Freezer Works c1930



Railway Station, c1910



Thomas Flour Mill c1925



Murtoa Silo Art 2023



McDonald Street scene 1910



Marma Gully Hotel & Commercial Bank Building as seen today

